



GMT MONTHLY MEMBERSHIP PROGRESS REPORT

Results as of: 9/30/2019

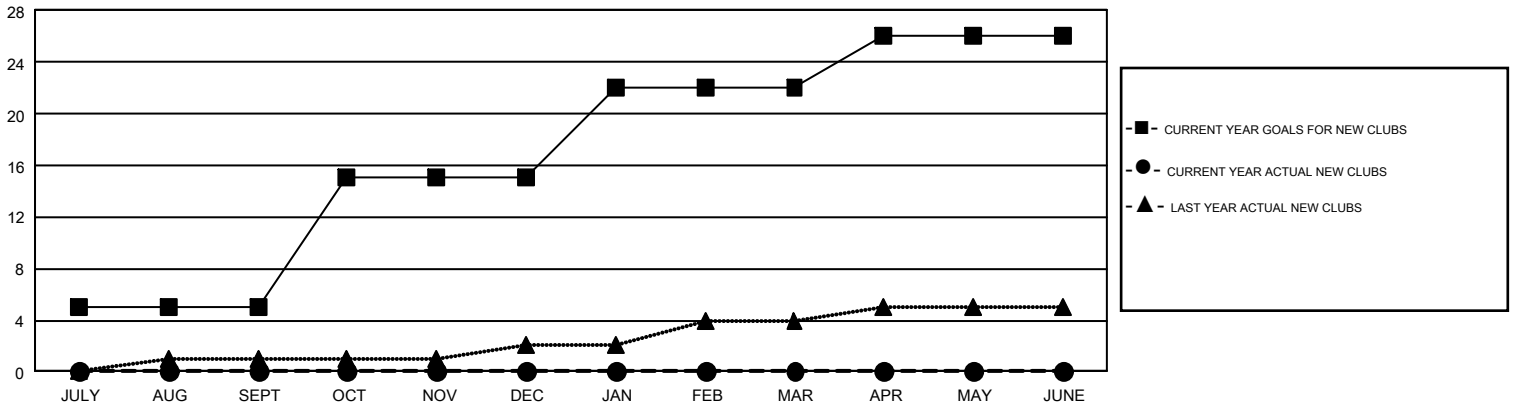
GMT Constitutional Area 5 - J, Group J

GMT: OPEN

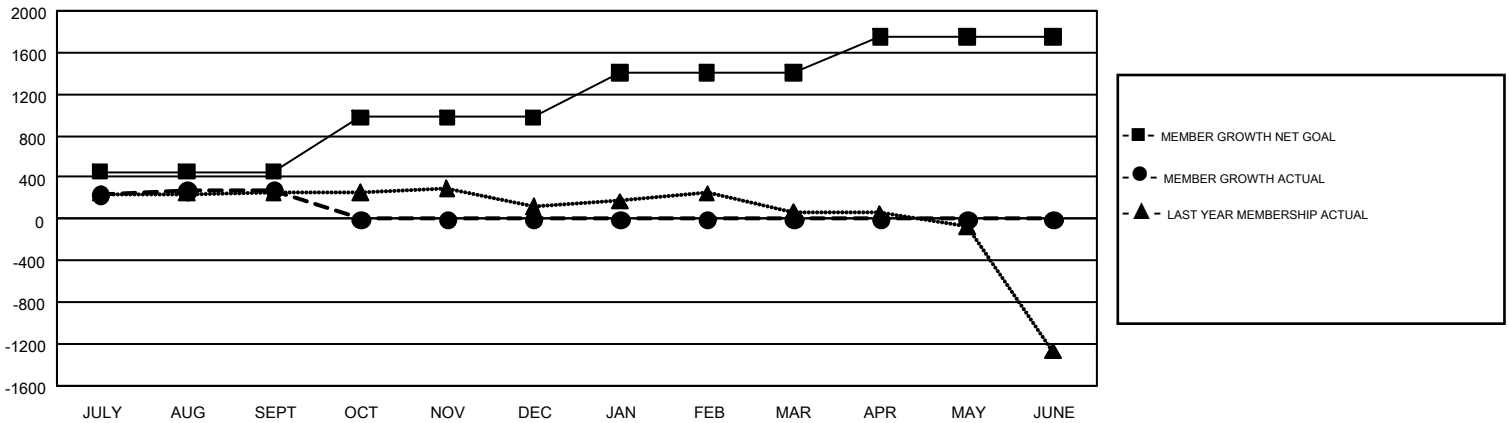
REPORT DOES NOT INCLUDE CLUBS IN UNDISTRICTED AREAS.

Clubs				Members			
RESULTS FOR 2019-2020				RESULTS FOR 2019-2020			
QUARTER	NEW CLUB GOAL	NEW CLUBS	DROPPED CLUBS	QUARTER	MEMBER GROWTH NET GOAL	MEMBER GROWTH ACTUAL	DROPPED MEMBERS ACTUAL (including transfers)
JULY/AUG/SEPT	5	0	1	JULY/AUG/SEPT	452	864	532
OCT/NOV/DEC	10	0	0	OCT/NOV/DEC	524	0	0
JAN/FEB/MAR	7	0	0	JAN/FEB/MAR	428	0	0
APR/MAY/JUNE	4	0	0	APR/MAY/JUNE	346	0	0

GOALS AND ACTUAL NEW CLUBS CUMULATIVE



GOALS AND ACTUAL MEMBERS CUMULATIVE



DROPPED CLUBS: 1	404 CLUBS OF 794 ADDED 1 OR MORE NEW MEMBERS	GENDER DISTRIBUTION MALE 23,761 (78.34%) FEMALE 6,571 (21.66%)
DROPPED MEMBERS DECEASED 53 CLUB CANCELLED 0 OTHER 479 <hr/> TOTAL 532	CLICK HERE FOR CUMULATIVE MEMBERSHIP DATA	TOTAL FAMILY UNIT MEMBERS 8,934 FAMILY MEMBERS PAYING HALF DUES 4,760